



**C O N F E R E N C E S**  
WITH A CONSCIENCE



**FOLLY FARM**

## Contents

<b>Conferences and Events at Folly Farm .....</b>	<b>3</b>
<b>Meeting Rooms and Capacities .....</b>	<b>4</b>
<b>The Oak and Willow Barn .....</b>	<b>4</b>
<b>The Hedgehog .....</b>	<b>5</b>
<b>The Field Mouse .....</b>	<b>6</b>
<b>The Old Dairy .....</b>	<b>7</b>
<b>Delegate Packages and Rates.....</b>	<b>8</b>
<b>Residential Conferences – Accommodation .....</b>	<b>8</b>
<b>Map of Folly Farm .....</b>	<b>12</b>
<b>How To Find Us .....</b>	<b>14</b>



## Conferences and Events at Folly Farm

An inspiring conference venue surrounded by wildlife and ancient woodlands

---

**Folly Farm Centre is an environmentally sustainable, meeting and event venue nestled in the heart of a 250-acre nature reserve, yet conveniently located just 10 miles from Bristol and Bath.**

As one of Somerset's hidden gems, 'Folly' as it is affectionately known, offers peaceful seclusion and the most breath-taking views across Chew Valley Lake and the Mendip Hills; an Area of Outstanding Natural Beauty.

With six well-equipped meeting rooms, additional breakout areas and comfortable farmhouse style accommodation, this beautifully restored 18th century farmhouse offers an inspirational and extremely private venue for day and residential meetings, conferences, team-building activities, training days and corporate events.

### Conference Facilities Overview:

- Six meeting rooms with additional break-out areas for up to 150 delegates
- 20 farmhouse-style and studio bedrooms accommodating up to 58 delegates
- Unique and private countryside location with amazing views and plenty of fresh air
- Full access for delegates to our 250-acre nature reserve, including an 'access-for-all' trail suitable for wheelchair users
- Just a short drive to Bristol Airport and Bristol city centre.
- Seasonal menus created from locally-sourced, organic produce whenever possible
- Environmentally sustainable with eco-features; dedicated to protecting the environment
- Wide selection of on-site team building and staff well-being activities
- Free wireless internet access in all meeting areas and bedrooms
- Free car parking for approximately 70 vehicles and electric car charge points

If you are an ethical business like us, you'll love the fact that all paper on site is recycled – including the conference pads and pens that use vegetable inks – available to buy. We also use solar and biomass heating, and our wastewater is broken down in our reed bed sewage system. We even harvest rainwater!

Best of all, owned and managed by Avon Wildlife Trust, all profits are gift-aided back to the Trust to protect local wildlife and inspire people about the importance and benefits of nature.

**Folly Farm is unique in more ways than one - we hope to have the opportunity to share this extra special meeting venue with you.**

[www.follyfarm.org/conferencing](http://www.follyfarm.org/conferencing)

Folly Farm Centre  
Stowey  
Pensford  
Bristol BS39 4DW

**Tel:** +44 (0)1275 331 590

**Email:** [info@follyfarm.org](mailto:info@follyfarm.org)

**Website:** [www.follyfarm.org](http://www.follyfarm.org)



**Avon**  
Wildlife Trust

## Meeting Rooms and Capacities

Seven well-equipped meeting rooms and breakout areas with nature on the doorstep

	Theatre	Classroom	Boardroom	Cabaret	Banquet	U-Shape	Reception	Dimensions
<b>The Oak Room</b>	80	30	45	60	70	34	150	13.2m x 4.6m
<b>The Willow Room</b>	24	15	15	24	30	15	40	9.8m x 4.3m
<b>The Hedgehog Hub</b>	-	-	18	22	18	18	-	6.5m x 4.8m
<b>The Field Mouse</b>	35	15	20	-	-	15	-	9m x 4.2m
<b>The Owl's Nest</b>	-	8	11	-	-	8	-	4.9m x 4.8m
<b>The Old Dairy</b>	49	20	30	32	49	20	60	12.3m x 4.2m
<b>The Burrow</b>	-	-	8	-	-	-	-	4.7m x 3.9m

**The above room capacities are highly flexible and should only be used as a guide.**

**Alternative furniture can be arranged to accommodate higher numbers if required.**

## The Oak and Willow Barn

---

Located within the restored 18<sup>th</sup> century barn, The Oak Barn is the largest conference and event space at Folly Farm, complete with exposed oak beams, brick walls, impressive full-length barn doors and a solid oak floor. Overlooking the kitchen gardens and paddock, this room is located on the ground floor and benefits from its own private washroom facilities.

The Oak Barn connects to The Willow Barn via an internal door and also features full-length windows between the two rooms.

The Willow Barn can be accessed directly from the pretty courtyard or via a small number of steps from the adjoining Oak Barn.

The Willow Barn provides an ideal reception or break-out room for conferences in The Oak Barn.



## The Hedgehog

---

The Hedgehog is a stylish and contemporary meeting space located on the ground floor, just a stone's throw from our kitchen gardens and is surrounded by fields and woodland.

Complete with exposed beams and an impressive, locally-made natural wood table, the décor is reflective of its surroundings. The Hedgehog offers a light meeting space and is complete with both audio visual equipment and whiteboard.



## The Field Mouse

---

The Field Mouse is a versatile space, supporting a calm and creative atmosphere for more informal meetings, training sessions and events. Located within the main farmhouse building, this light and spacious room has two lower-level windows along each of the side walls, combined with traditional farmhouse features. This room also boasts a movable wall; enabling adjustments to the space depending on your requirements.

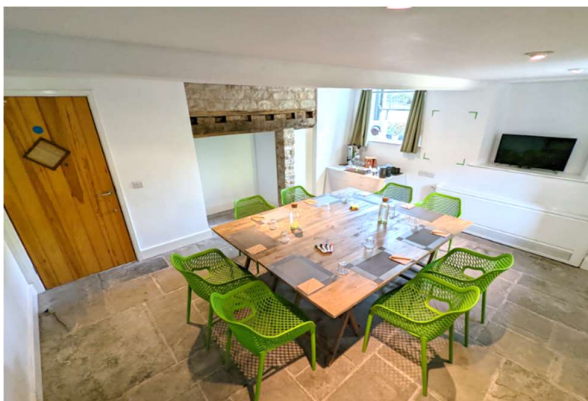
The Field Mouse can also be used alongside the adjoining glass-roofed Atrium to create the perfect meeting room/break-out area.



## The Burrow

---

A smaller cosy room with original flagstone flooring, Bath stone walls provides a perfect space for meetings or training sessions with up to 8 people. Located next to the Old Dairy and opening directly on to the Dairy Courtyard and Orchard Garden, it is perfectly positioned for all your catering needs with the added option to move outside. The Burrow also makes the perfect break-out room alongside Fieldmouse.



## The Owl's Nest

---

The Owl's Nest boasts a spot on the farm with far-reaching views out across the Mendip Hills and beyond. The Owl's Nest is a light and contemporary meeting room with a kitchenette, including tea and coffee station and fridge.

Whilst this space is extremely versatile, it's perfect when used as a training or briefing room prior to outdoor activities and team building – nature really is right on your doorstep!



## The Old Dairy

---

Accessed via a short flight of steps from the Atrium or directly from a lower level entrance, The Old Dairy is a versatile space that can be used as a dining area or meeting space. The ambient lighting, exposed brick walls and impressive fireplace complete with a working log burner creates a more informal atmosphere.



## Delegate Packages and Rates

---

### Day Delegate Rate (8hrs)

£42.50 + VAT per delegate, including:

- Main meeting room hire
  - Complimentary Wi-Fi, laptop, projector and screen
  - Arrival Fairtrade tea and coffee
  - Mid-morning Fairtrade tea and coffee with homemade biscuits
  - Seasonal lunch including freshly-made sandwiches, homemade soup, crisps and fruit
  - Afternoon Fairtrade tea and coffee and homemade cake
  - Free on-site parking
  - Access to Folly Farm's 250-acre nature reserve.
- 

### Half Day Delegate Rate (4hrs)

£25.50 + VAT per delegate, including:

- Main meeting room hire
- Complimentary Wi-Fi, laptop, projector and screen
- Arrival Fairtrade tea and coffee\*
- Mid-morning Fairtrade tea and coffee with homemade biscuits\*
- Seasonal lunch including freshly-made sandwiches, homemade soup, crisps and fruit
- Afternoon Fairtrade tea and coffee and homemade cake\*\*
- Free on-site parking
- Access to Folly Farm's 250-acre nature reserve.

*\*Morning meetings only  
\*\*Afternoon meetings only.*

---

### Residential Conference Rate (24hrs)

£145.00 + VAT per person, including all Day Delegate Rate inclusions, plus:

- Two-course evening meal served in a private dining room
- An honesty bar stocked with a wide selection of locally-sourced and organic drinks
- Overnight accommodation\*
- Full English breakfast served in a private dining room.

*\*Based on single occupancy.  
Residential conference rate for shared accommodation from £110 + VAT per delegate.  
Minimum numbers may apply to all delegate packages*



## Food & Drink

---

Here at Folly, we value the importance of our food throughout your stay with the continuous aim of ensuring guests are well-fed, energised and engaged.

Wherever possible, we use produce from our own kitchen gardens and any additional produce is sourced via trusted local suppliers using high welfare meat.

Known dietary allergies can be catered for and we can be flexible to suit the requirements of your event.

### Example Breakfast Menu

Local butchers sausages  
Back bacon  
Scrambled eggs  
Roasted tomatoes  
Buttered Mushrooms  
Baked Beans

Cereal Selection  
Fresh fruits and berries  
Nuts, seeds and dried fruits  
Warm pastries  
White and granary toast  
Yoghurts, jams, marmalade  
Tea, coffee and fruit juice

### Example Lunch Menu

Falafels, Humus  
Flat Breads  
Seasonal Salads  
Fresh fruit platter

Homemade Quiches OR  
Baked Jacket Potatoes with hot and cold fillings  
Both served with seasonal salads  
Fresh fruit platter

### Example Dinner Menu

Homemade curries  
Pilaf rice  
Chapatis/Onion Bhajis  
Pickles and chutneys  
Dessert

Homemade pies  
Creamed potatoes  
Seasonal vegetables  
Sauces  
Dessert

For breaks throughout the day, we provide Fair trade Clipper organic teas, coffee and chilled water.

For overnight stays, an honesty bar is available with a selection of wines, prosecco, Local ales, cider, lager. Soft drinks are also available.

Any drinks consumed from the honesty bar will be charged after the event.



## Activities and Team Building

---

At Folly farm, we have large outside spaces for people to use as they wish, from a brainstorming group with inspirational views to just strengthening and building new relationships with colleagues.

Through our partners at ACF Teambuilding & Events, we can also organise several team building activities from sheep and duck herding, to woodland crafts and skills, in order to really engage with nature and the local environment.

There is also the opportunity for mindfulness sessions including yoga in the reserve, a woodland walk and meditation surrounded by birdsong.

If you are interested in any teambuilding activities, please contact us to discuss your requirements.

## Residential Conferences – Accommodation

### Sleeping up to 58 guests

---

Folly Farm has 20 on-site bedrooms, comprising of 10 farmhouse-style bedrooms and 10 studio bedrooms.

At the end of the day, delegates can relax next to the log-burning fire, take dusk walks around the nature reserve or sit under the stars by the fire pit (available to hire at an additional charge). The next morning, wake up to a hearty breakfast served in the Old Dairy dining room.

The maximum number for residential conferences is 58 delegates, on a shared basis. However, if single occupancy accommodation is required, a total of 20 delegates can be accommodated but please note that a small number of bedrooms share bathroom facilities. If single occupancy en-suite/own bathroom accommodation is required, a total of 18 delegates can be accommodated on-site at Folly Farm.

## The Farmhouse – 10 bedrooms

Sleeping up to 28 guests, The Farmhouse offers comfortable country-style accommodation with all bedrooms leading off from the central Atrium. The Atrium is a perfect meet-and-greet and/or communal space which is complete with comfy sofas, a real log fire and a glass ceiling.

Room No.	Room Layout and Facilities	Location	Max. Occupancy
Room 11	Double en-suite and bunk beds	Ground floor	4 guests
Room 12	Double end-suite	Ground floor	2 guests
Room 14**	Bunk beds with toilet and wash basin	Ground floor	2 guests
Room 21*	Bunk beds with wash basin	First floor	2 guests
Room 22	Double en suite and bunk beds	First floor	4 guests
Room 23	Double en-suite	First floor	2 guests
Room 24*	Bunk beds with toilet and wash basin	First floor	2 guests
Room 31	Double en-suite	Second floor	2 guests
Room 32	Double en-suite and bunk beds	Second floor	4 guests
Room BM**	2 sets of bunk beds	Basement	4 guests

**TOTAL: 28 guests**

*\*Room 21 and Room 24 share bathroom facilities.  
\*\*Room 14 and Room BM share bathroom facilities.  
Double rooms can be requested as twin beds in advance.*

## The Studios – 10 bedrooms

Sleeping up to 30 guests, the self-contained studios are located just a stone's throw from the Farmhouse with stunning views over Chew Valley Lake, the Mendip Hills and beyond. All studio bedrooms are located on the ground floor.

Room Number	Room Layout and Facilities	Max. Occupancy
Studios 1-3	Double/twin and two singles* en-suite	4 guests per room
Studio 4-7	Double/twin and single** en-suite	3 guests per room
Studio 8 - Bridal Suite	Double en-suite	2 guests
Studios 9 and 10	Double en-suite	2 guests

**TOTAL: 30 guests**

*\*Two full size single day bed suitable for adults or children  
\*\*One full size single day bed suitable for adults or children*

## What's Included?

- Bed linen and towels (one bath sheet and one hand towel per person)
- Complimentary Bramley toiletries
- In-room tea and coffee making facilities
- Free Wi-Fi access
- Access to 250-acre nature reserve

## Accommodation at Folly Farm

---



Farmhouse Exterior



Studio Bedroom Exterior



Farmhouse Bedroom



Farmhouse Bedroom



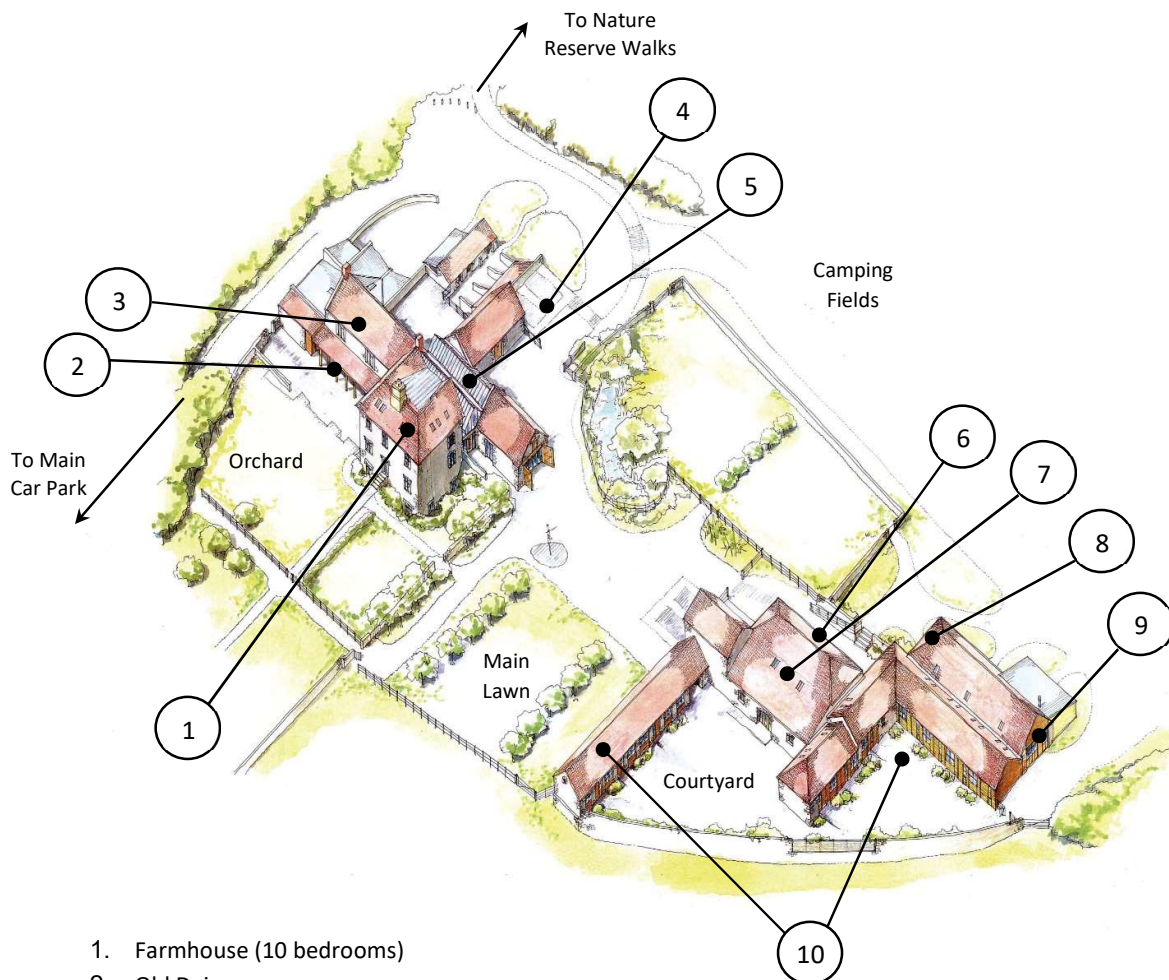
Studio Bedroom



Studio Bedroom

## Map of Folly Farm

The map below of Folly Farm estate outlines the location of each of the buildings and rooms included within your exclusive use hire.



1. Farmhouse (10 bedrooms)
2. Old Dairy
3. Fieldmouse Room
4. Disabled Parking and Electric Charging Points
5. Atrium
6. Oak Barn
7. Willow Barn
8. Hedgehog Room
9. Owl's Nest Room
10. Studios (10 bedrooms)

## How To Find Us

---

### Address

Folly Farm Centre  
Stowey  
Pensford  
Bristol  
BS39 4DW

**Tel:** +44 (0)1275 331 590

**Email:** [weddings@follyfarm.org](mailto:weddings@follyfarm.org)

**Website:** [www.follyfarm.org](http://www.follyfarm.org)

Folly Farm is located within the Somerset village of Stowey and lies within the picturesque Chew Valley, approximately 7 miles south of Bristol and 8 miles west of Bath. It is accessible via the A37 and A368.

We are a remote venue so would suggest using private hire transport and pre-booking taxis.

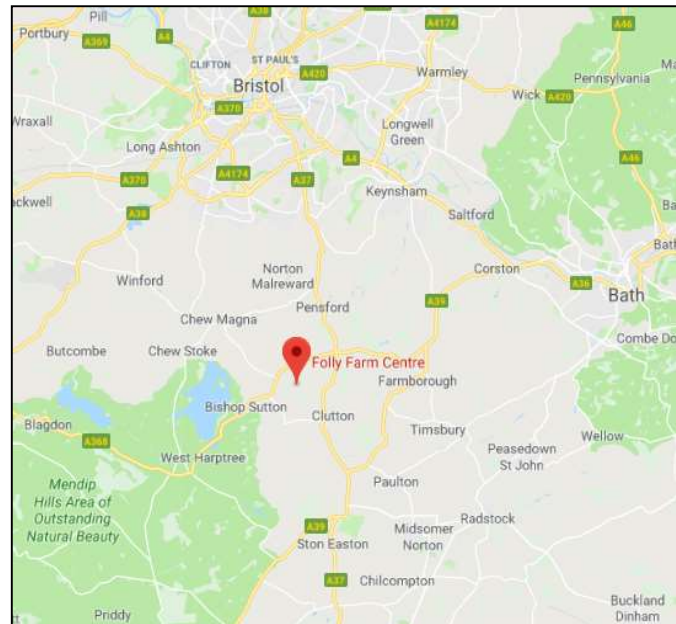
### Walking and Cycling

Folly Farm is easily accessible by bicycle, and the West County Way, part of the National Cycle Network, passes close by. For walkers, two well-known long distance footpaths, Monarch's Way and Mendip Way, pass close to Folly Farm.

### Getting Here by Car

Free car parking is available, with two free electric car charging points for electric and hybrid vehicles.

**From Bristol:** Take the A37 south and go through Pensford. At the roundabout, turn right onto the A368 towards Bishop Sutton. After two miles, go past the turning to Chew Magna and take the



next small turning on your left very shortly after, just before reaching Stowey.

**From Bath:** Take the A39 through Newton St Loe, taking the second exit (past The Globe pub). Continue straight through Marksbury and continue onto the A368 (the right hand side of the petrol station after the traffic lights). At the roundabout, take the second exit towards Bishop Sutton. After two miles, take the small turning on your left, just before reaching Stowey.

### Taxis

We would recommend pre-booking taxis with the following local companies. If they are unavailable then we can provide a longer list of companies in the area.

- Chew Cars - 07831 858765 / 07871 488133
- Reza Taxi - 07938 040928

*Folly Farm is an environmentally sustainable venue complete with solar panels, a biomass boiler, rainwater harvesting, a reed bed sewage system and only eco-friendly cleaning products.*

*All profits from Folly Farm go straight to Avon Wildlife Trust.*

**To check availability or to book**  
please contact us on 01275 331590  
or email [info@follyfarm.org](mailto:info@follyfarm.org)



**FOLLY FARM**